



# PINNACLE — ANALYTICS —

## Potency Results

**Sample Name:** THCA Diamonds  
**Client:** Concentrate CBD  
**Client Batch ID:**

Pinnacle-Analytics.com  
3549 Lear Way, Suite 101  
Medford OR 97504  
P:(541)300-8217

**Sample ID:** rC-HS-345-D342

Date Sampled: 4/17/2023

**Matrix:** Concentrate

Date Reported: 4/20/2023

**Prep Analyst:** Megan E.

Client License:

**Analysis Method:** 0630322+1 H3 4-20-2022 #1.lcm

5820 N.Church St

**Sampling Method:** N/A

Suite D-307

**Reference Method:** JCB 2009: HPLC/DAD

Greensboro, NC 27455

**Analysis Batch:** 4-19-2023 H3 14, 185, 234, 330, 345 Solids

For R&D Purposes Only

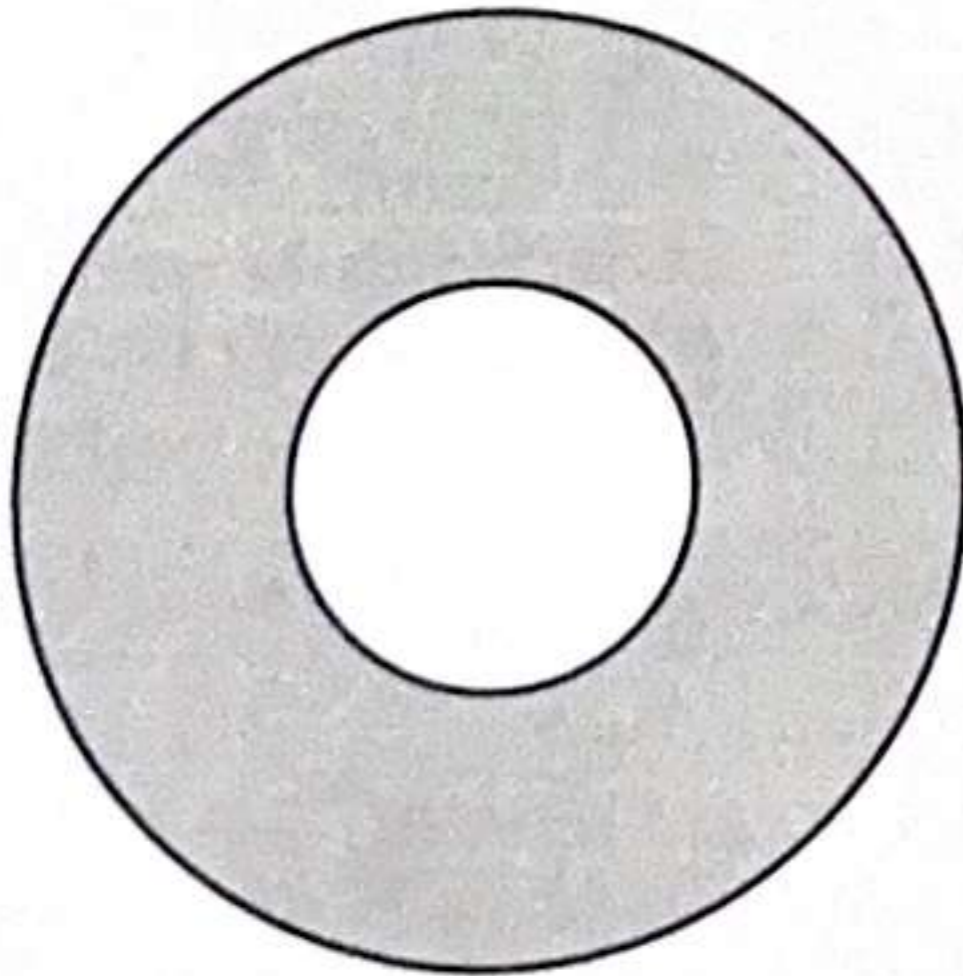
<b>Total THC</b> (THCA*0.877+d9-THC)	87.7%
<b>Total CBD</b> (CBDA*0.877+CBD)	<LOQ%
<b>Moisture Content</b>	N/A

Cannabinoid	% Weight	mg/g
CBDVA	<LOQ	<LOQ
CBDV	<LOQ	<LOQ
CBDA*	<LOQ	<LOQ
CBGA	<LOQ	<LOQ
CBG	<LOQ	<LOQ
CBD*	<LOQ	<LOQ
THCV	<LOQ	<LOQ
CBN	<LOQ	<LOQ
d9-THC*	<LOQ	<LOQ
d8-THC*	<LOQ	<LOQ
CBC	<LOQ	<LOQ
THCA*^^	100.0	1000.0
<b>Total Cannabinoids</b>	100.0	1000.0

\*ORELAP Accredited Analyte

Limit Of Quantitation: 0.2%, analyte not measured

^Raw result for THCA\*^ was 103.0%



- THCA\*^^
- Other



These test results may not be altered or reproduced except in full without the permission of Pinnacle Analytics. These results were generated following the Oregon Administrative Rules and in accordance with the NELAP Institute under ORELAP License #4152  
Report generated by Routine\_Potency\_Rev11\_4-16-2023

Kris Ford, PhD  
Lab Director





# PINNACLE

— ANALYTICS —

## Potency Results

**Sample Name:** THCA-CBD Crystallino  
**Client:** Concentrate CBD  
**Client Batch ID:**

Pinnacle-Analytics.com  
3549 Lear Way, Suite 101  
Medford OR 97504  
P:(541)300-8217

**Sample ID:** rC-HS-345-D341

**Matrix:** Concentrate

**Prep Analyst:** Megan E.

**Analysis Method:** 0630322+1 H3 4-20-2022 #1.lcm

**Sampling Method:** N/A

**Reference Method:** JCB 2009: HPLC/DAD

**Analysis Batch:** 4-19-2023 H3 14, 185, 234, 330, 345 Solids

Date Sampled: 4/17/2023

Date Reported: 4/20/2023

Client License:

5820 N.Church St

Suite D-307

Greensboro, NC 27455

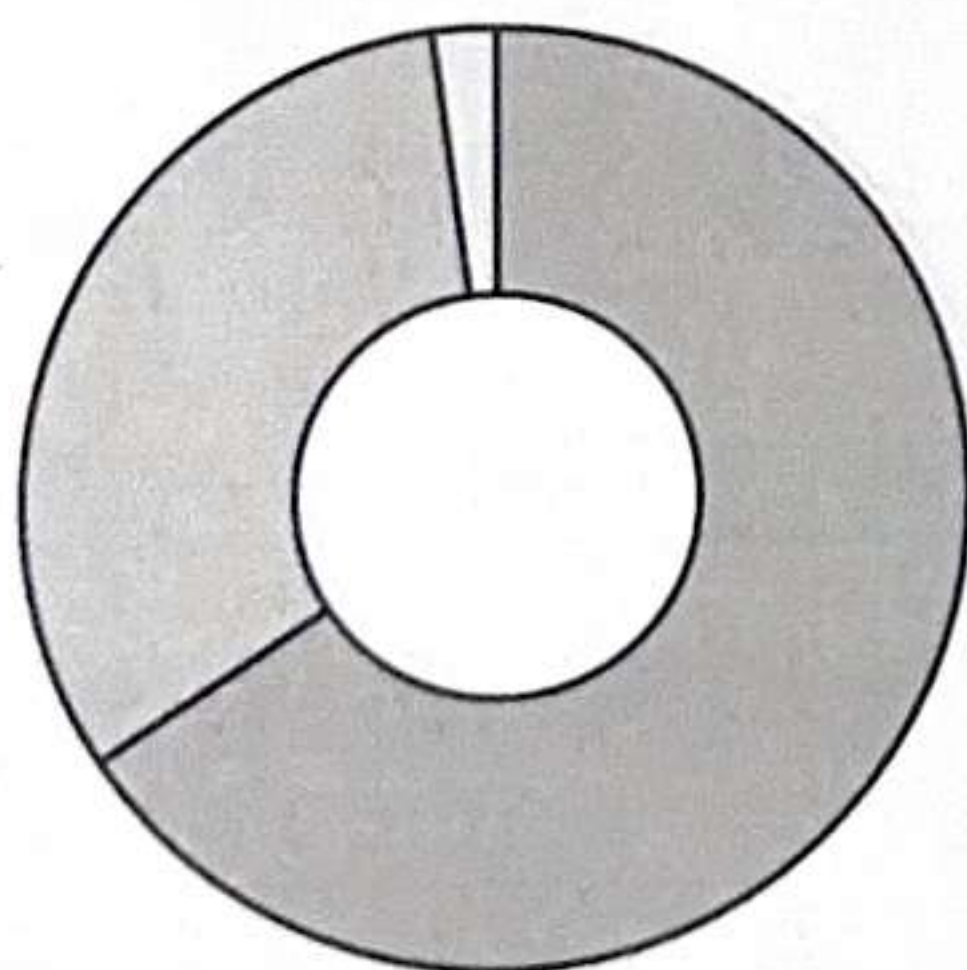
For R&D Purposes Only

<b>Total THC</b> (THCA*0.877+d9-THC)	28.1%
<b>Total CBD</b> (CBDA*0.877+CBD)	65.8%
<b>Moisture Content</b>	N/A

Cannabinoid	% Weight	mg/g
CBDVA	<LOQ	<LOQ
CBDV	<LOQ	<LOQ
CBDA*	<LOQ	<LOQ
CBGA	<LOQ	<LOQ
CBG	<LOQ	<LOQ
CBD*	65.8	658.0
THCV	<LOQ	<LOQ
CBN	<LOQ	<LOQ
d9-THC*	<LOQ	<LOQ
d8-THC*	<LOQ	<LOQ
CBC	<LOQ	<LOQ
THCA*	32.0	320.0
<b>Total Cannabinoids</b>	<b>97.8</b>	<b>978.0</b>

\*ORELAP Accredited Analyte

Limit Of Quantitation: 0.2%, analyte not measured



- CBD\*
- THCA\*
- Other



These test results may not be altered or reproduced except in full without the permission of Pinnacle Analytics. These results were generated following the Oregon Administrative Rules and in accordance with the NELAP Institute under ORELAP License #4152  
Report generated by Routine\_Potency\_Rev11\_4-16-2023

Kris Ford, PhD  
Lab Director





# PINNACLE — ANALYTICS —

## Potency Results

Sample Name: Moroccan Ketama Gold Hashish  
Client: Concentrate Group  
Client Batch ID:

Pinnacle-Analytics.com  
3549 Lear Way, Suite 101  
Medford OR 97504  
P:(541)300-8217

Sample ID: rC-HS-302-E375

Date Sampled: 2/16/2024  
Date Reported: 2/20/2024  
Client License: N/A  
For R&D Purposes Only

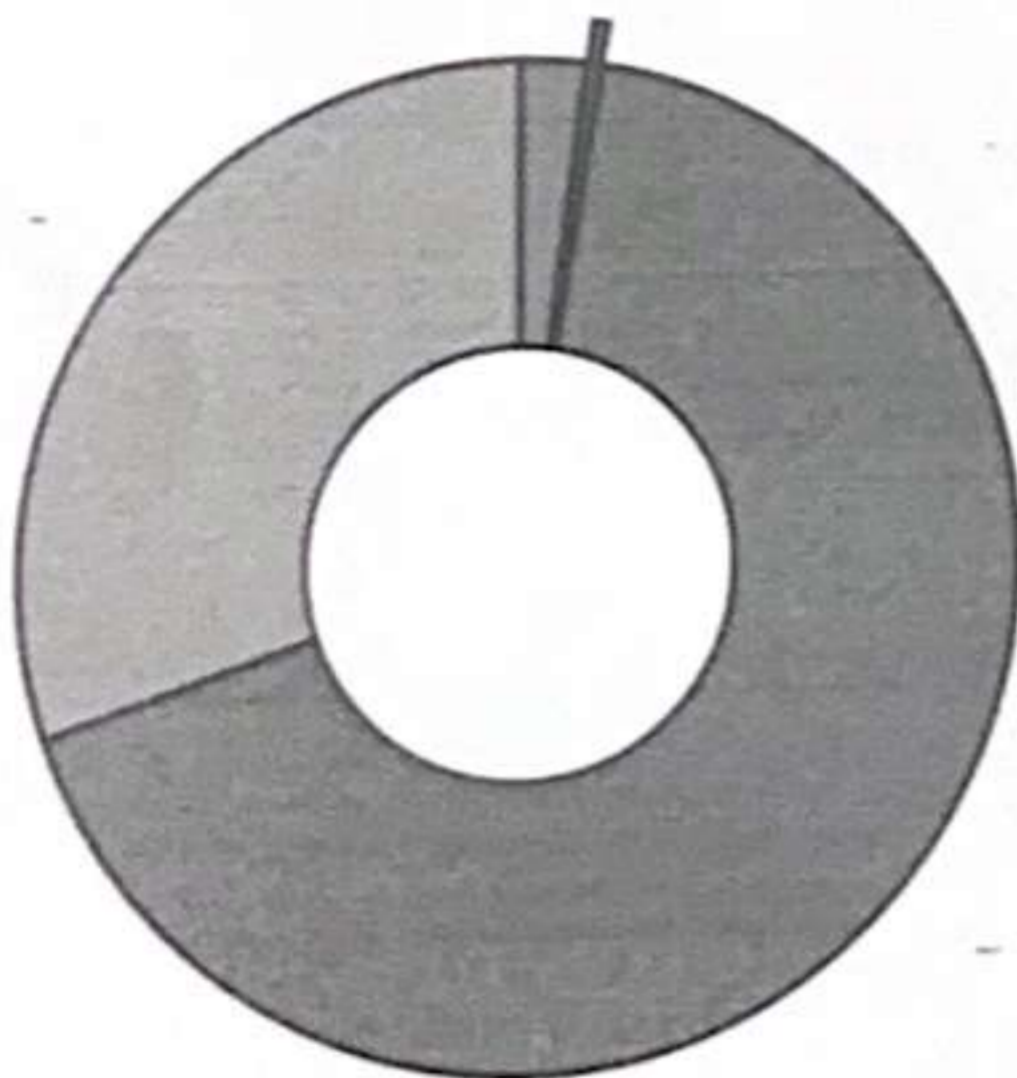
Matrix: Concentrate

Prep Analyst: Megan A.  
Analysis Method: 0630322+1 H3 4-20-2022 #1.lcm  
Sampling Method: N/A  
Reference Method: JCB 2009: HPLC/DAD  
Analysis Batch: 2-20-2024 H3 128, 205, 302, 434 Solids

Total THC (THCA*0.877+d9-THC)	58.8%
Total CBD (CBDA*0.877+CBD)	0.507%
Moisture Content	N/A

Cannabinoid	% Weight	mg/g
CBDVA	<LOQ	<LOQ
CBDV	<LOQ	<LOQ
CBDA*	<LOQ	<LOQ
CBGA	<LOQ	<LOQ
CBG	2.14	21.4
CBD*	0.507	5.07
THCV	<LOQ	<LOQ
CBN	<LOQ	<LOQ
d9-THC*	<LOQ	<LOQ
d8-THC*	<LOQ	<LOQ
CBC	<LOQ	<LOQ
THCA*	67.1	671.0
<b>Total Cannabinoids</b>	<b>69.75</b>	<b>698.0</b>

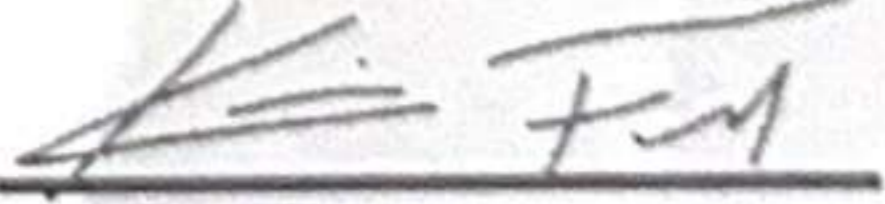
\*ORELAP Accredited Analyte  
Limit Of Quantitation: 0.2%, analyte not measured



- CBG
- CBD\*
- THCA\*
- Other



These test results may not be altered or reproduced except in full without the permission of Pinnacle Analytics. These results were generated following the Oregon Administrative Rules and in accordance with the NELAP Institute under ORELAP License #4152  
Report generated by Routine\_Potency\_Rev13\_8-1-2023

  
Kris Ford, PhD  
Lab Director





# PINNACLE — ANALYTICS —

## Potency Results

**Sample Name:** THCA-CBG Kief  
**Client:** Concentrate CBD  
**Client Batch ID:**

Pinnacle-Analytics.com  
3549 Lear Way, Suite 101  
Medford OR 97504  
P:(541)300-8217

**Sample ID:** rC-HS-345-D547

**Matrix:** Concentrate

**Prep Analyst:** Megan E.

**Analysis Method:** 0630322+1 H3 4-20-2022 #1.lcm

**Sampling Method:** N/A

**Reference Method:** JCB 2009: HPLC/DAD

**Analysis Batch:** 5-12-2023 H3 14, 234, 345, 356 Solids

Date Sampled: 5/10/2023

Date Reported: 5/15/2023

Client License:

5820 N. Church St

Suite D-307

Greensboro, NC 27455

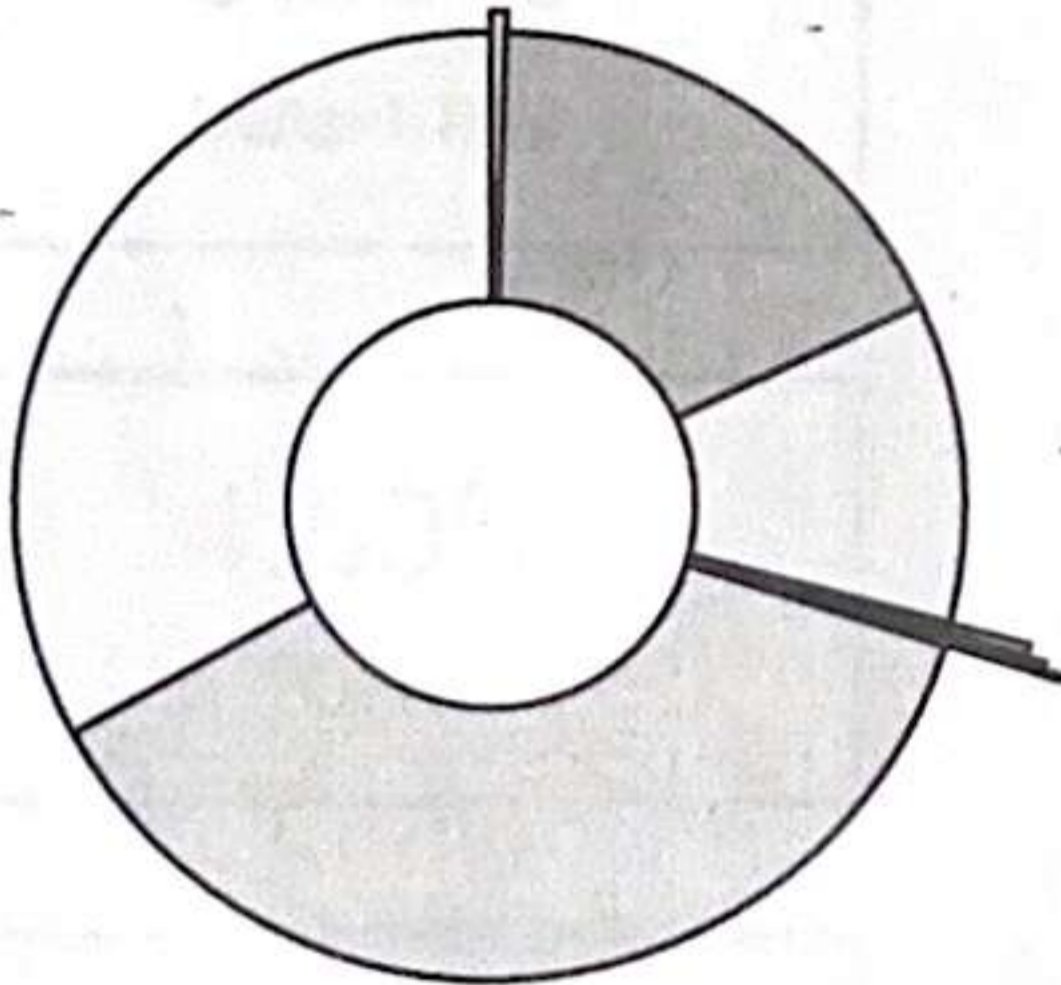
For R&D Purposes Only

<b>Total THC</b> (THCA*0.877+d9-THC)	32.9%
<b>Total CBD</b> (CBDA*0.877+CBD)	0.836%
<b>Moisture Content</b>	N/A

Cannabinoid	% Weight	mg/g
CBDVA	<LOQ	<LOQ
CBDV	<LOQ	<LOQ
CBDA*	0.515	5.15
CBGA	17.5	175.0
CBG	11.0	110.0
CBD*	0.384	3.84
THCV	<LOQ	<LOQ
CBN	<LOQ	<LOQ
d9-THC*	0.192	1.92
d8-THC*	<LOQ	<LOQ
CBC	0.203	2.03
THCA*	37.3	373.0
<b>Total Cannabinoids</b>	<b>67.1</b>	<b>671.0</b>

\*ORELAP Accredited Analyte

Limit Of Quantitation: 0.08%, analyte not measured



- CBDA\*     CBD\*     THCA\*
- CBGA     d9-THC\*     Other
- CBG     CBC



These test results may not be altered or reproduced except in full without the permission of Pinnacle Analytics. These results were generated following the Oregon Administrative Rules and in accordance with the NELAP Institute under ORELAP License #4152  
Report generated by Routine\_Potency\_Rev11\_4-16-2023

Kris Ford, PhD  
Lab Director



Concentrate Group

Sample 678-061224-051

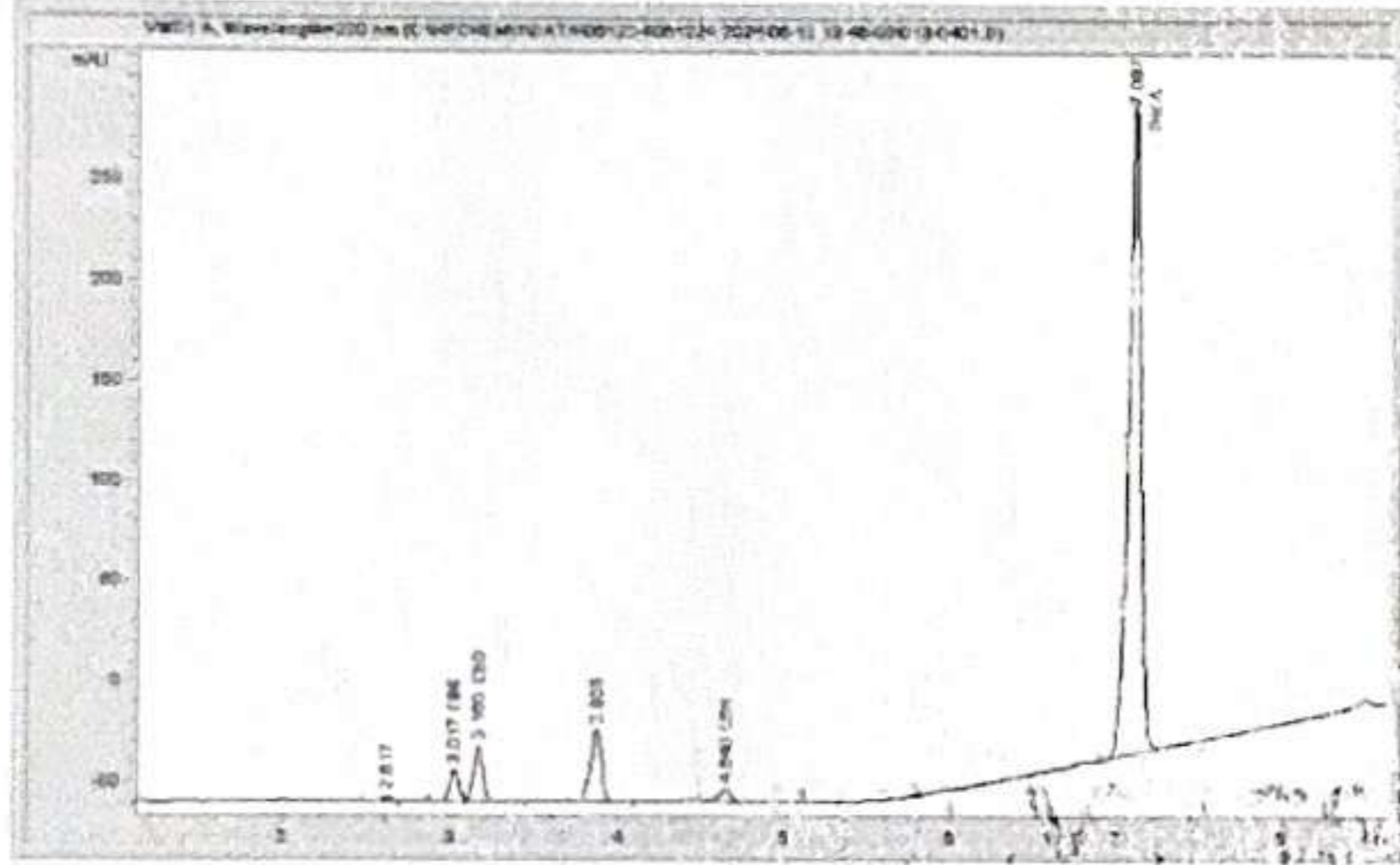
Sauce

Sample Submitted: 06-12-2024; Report Date: 06-19-2024

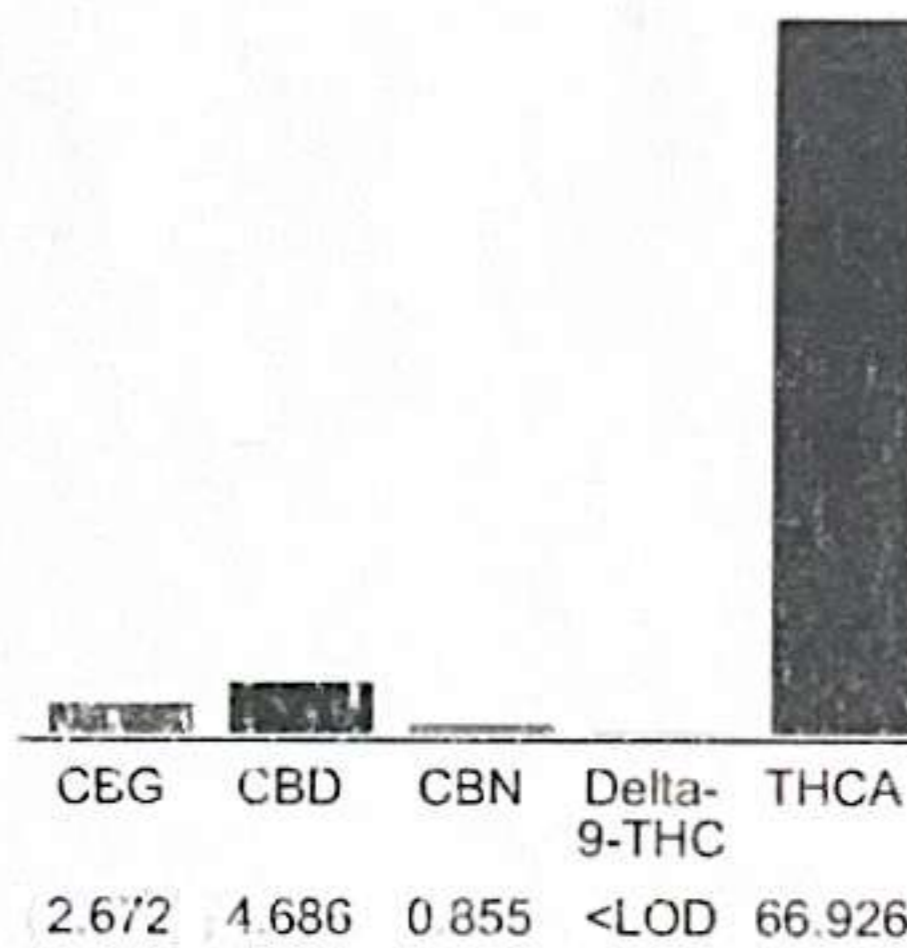
**Sauce**

Extract / Concentrate

**Chromatogram**



**Cannabinoid Profile**



**Cannabinoid Profile by HPLC**

**0.00%**  
Delta-9-THC

**4.69%**  
CBD

**75.14%**  
Total Cannabinoids

Cannabinoid	% wt	mg/g
CBG	2.672	26.72
CBD	4.686	46.86
CBN	0.855	8.55
Delta-9-THC	<LOD	<LOD
THCA	66.93	669.26
<b>Total Cannabinoids</b>	<b>75.14</b>	<b>751.4</b>
<b>Calculated Total THC</b>	<b>58.69</b>	<b>586.94</b>
<b>Calculated CBD Yield</b>	<b>4.69</b>	<b>46.86</b>

Calculated Total THC = Delta-9-THC + 0.877 \* THCA  
 Calculated Maximum CBD Yield = CBD + 0.877 \* CBDA

Notes: Delta-9-THC Limit of Detection (LOD): 0.001%

**Marin Analytics, LLC**  
 250 Bel Marin Keys Blvd, Suite D4  
 Novato, CA 94949

833-321-TEST / info@marinanalytics.com

**Mike Clemmons**  
 Lab Manager

This sample has been tested by Marin Analytics, LLC using valid testing methodologies and a quality system. Values reported relate only to the sample tested. Marin Analytics, LLC makes no claims as to the efficacy, safety, or other risks associated with any detected or non-detected levels of any compounds reported herein. This Certificate shall not be reproduced except in full without the written approval of Marin Analytics, LLC. Copyright 2023 Marin Analytics, LLC All Rights Reserved.





Concentrate Group

Sample 678-122823-024

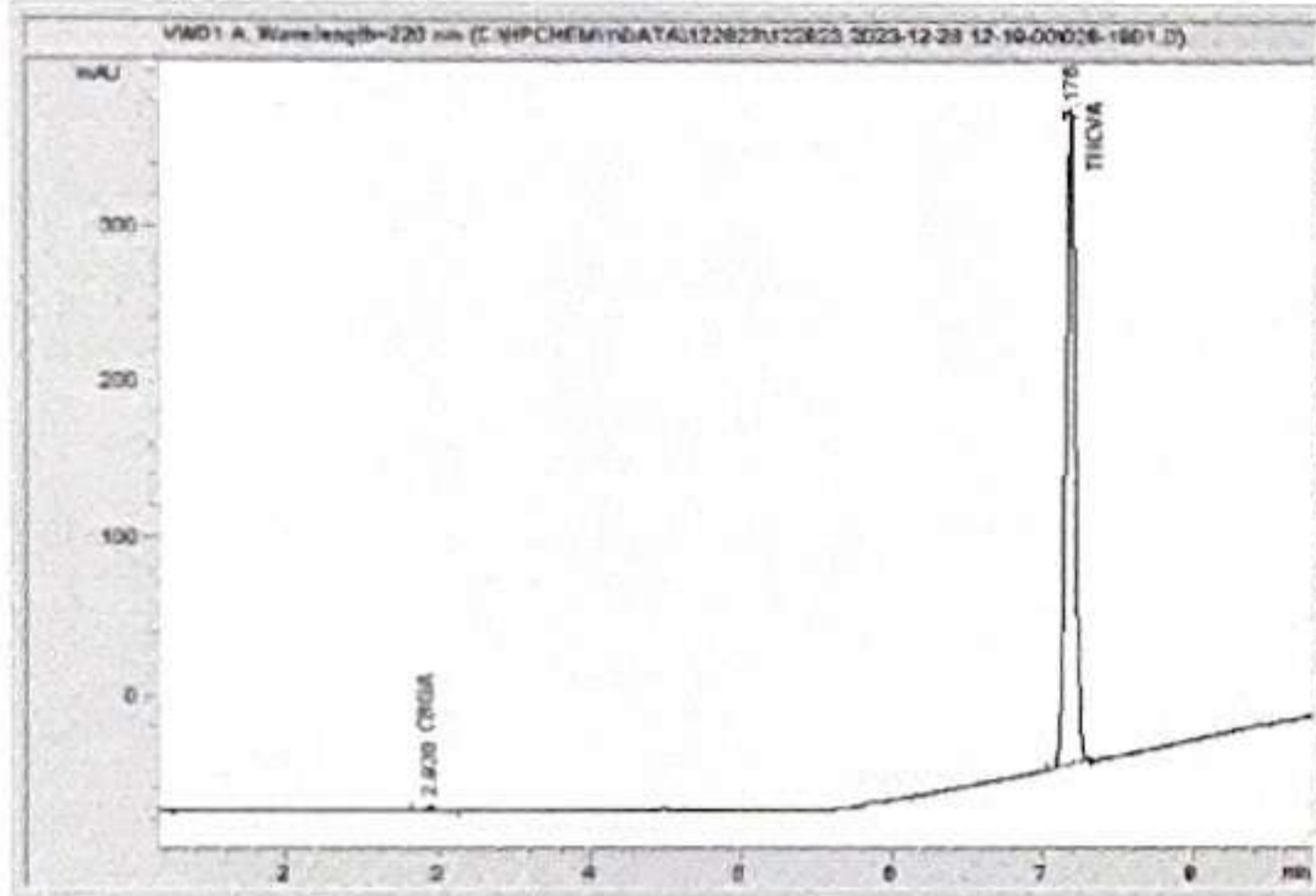
THCA (Pulverized Diamonds)

Sample Submitted: 12-28-2023; Report Date: 01-04-2024

**THCA Pulverized Diamonds (Isolate)**

Plant Material: Hemp Flower

Chromatogram



Cannabinoid Profile



Cannabinoid Profile by HPLC

**0.00%**  
Delta-9-THC

**0.00%**  
CBD

**99.73%**  
Total Cannabinoids

Cannabinoid	% wt	mg/g
CBGA	0.76	7.6
THCA	98.97	989.71
<b>Total Cannabinoids</b>	<b>99.73</b>	<b>997.3</b>
<b>Calculated Total THC</b>	<b>86.80</b>	<b>867.98</b>
<b>Calculated CBD Yield</b>	<b>0.00</b>	<b>0.00</b>

Calculated Total THC = Delta-9-THC + 0.877 \* THCA  
 Calculated Maximum CBD Yield = CBD + 0.877 \* CBDA

**Marin Analytics, LLC**  
 250 Bel Marin Keys Blvd, Suite D4  
 Novato, CA 94949

833-321-TEST / info@marinanalytics.com

**Mike Clemmons**  
 Lab Manager

This sample has been tested by Marin Analytics, LLC using valid testing methodologies and a quality system. Values reported relate only to the sample tested. Marin Analytics, LLC makes no claims as to the efficacy, safety, or other risks associated with any detected or non-detected levels of any compounds reported herein. This Certificate shall not be reproduced except in full without the written approval of Marin Analytics, LLC. Copyright 2023 Marin Analytics, LLC All Rights Reserved.





# PINNACLE — ANALYTICS —

## Potency Results

Sample Name: *THCA-CBD Budder*  
Client: Concentrate CBD  
Client Batch ID:

Pinnacle-Analytics.com  
3549 Lear Way, Suite 101  
Medford OR 97504  
P:(541)300-8217

**Sample ID:** rC-HS-345-D339

**Matrix:** Concentrate

**Prep Analyst:** Megan E.

**Analysis Method:** 0630322+1 H3 4-20-2022 #1.lcm

**Sampling Method:** N/A

**Reference Method:** JCB 2009: HPLC/DAD

**Analysis Batch:** 4-19-2023 H3 14, 185, 234, 330, 345 Solids

Date Sampled: 4/17/2023

Date Reported: 4/20/2023

Client License:

5820 N.Church St

Suite D-307

Greensboro, NC 27455

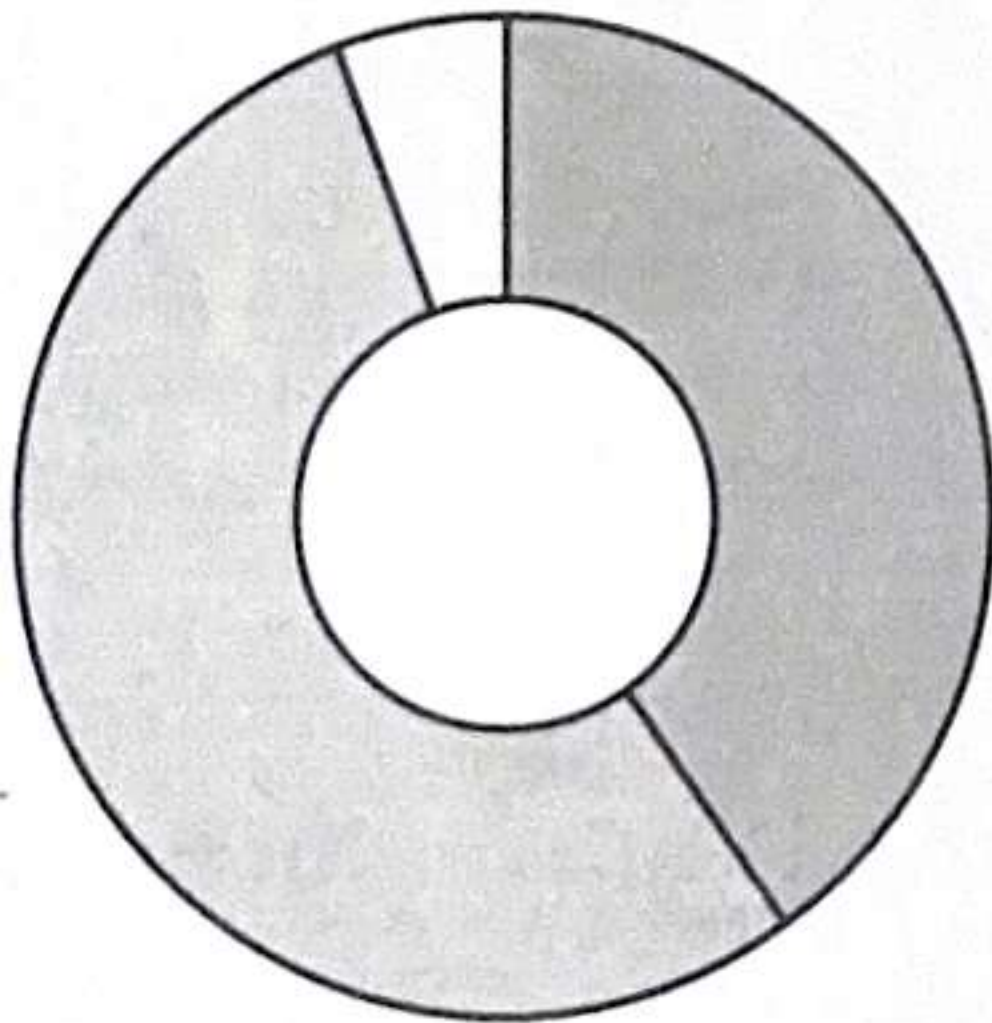
For R&D Purposes Only

<b>Total THC</b> (THCA*0.877+d9-THC)	47.5%
<b>Total CBD</b> (CBDA*0.877+CBD)	40.2%
<b>Moisture Content</b>	N/A

Cannabinoid	% Weight	mg/g
CBDVA	<LOQ	<LOQ
CBDV	<LOQ	<LOQ
CBDA*	<LOQ	<LOQ
CBGA	<LOQ	<LOQ
CBG	<LOQ	<LOQ
CBD*	40.2	402.0
THCV	<LOQ	<LOQ
CBN	<LOQ	<LOQ
d9-THC*	<LOQ	<LOQ
d8-THC*	<LOQ	<LOQ
CBC	<LOQ	<LOQ
THCA*	54.1	541.0
<b>Total Cannabinoids</b>	<b>94.3</b>	<b>943.0</b>

\*ORELAP Accredited Analyte

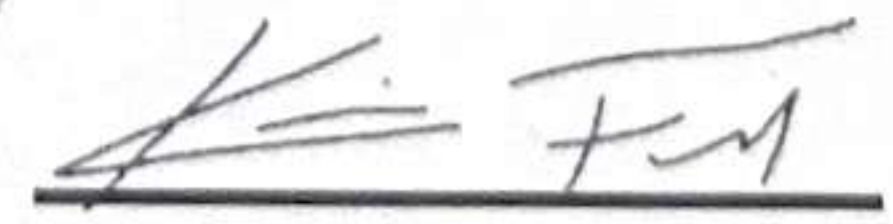
Limit Of Quantitation: 0.2%, analyte not measured



- CBD\*
- THCA\*
- Other



These test results may not be altered or reproduced except in full without the permission of Pinnacle Analytics. These results were generated following the Oregon Administrative Rules and in accordance with the NELAP Institute under ORELAP License #4152  
Report generated by Routine\_Potency\_Rev11\_4-16-2023

  
Kris Ford, PhD  
Lab Director



Concentrate Group

Sample 678-061224-050

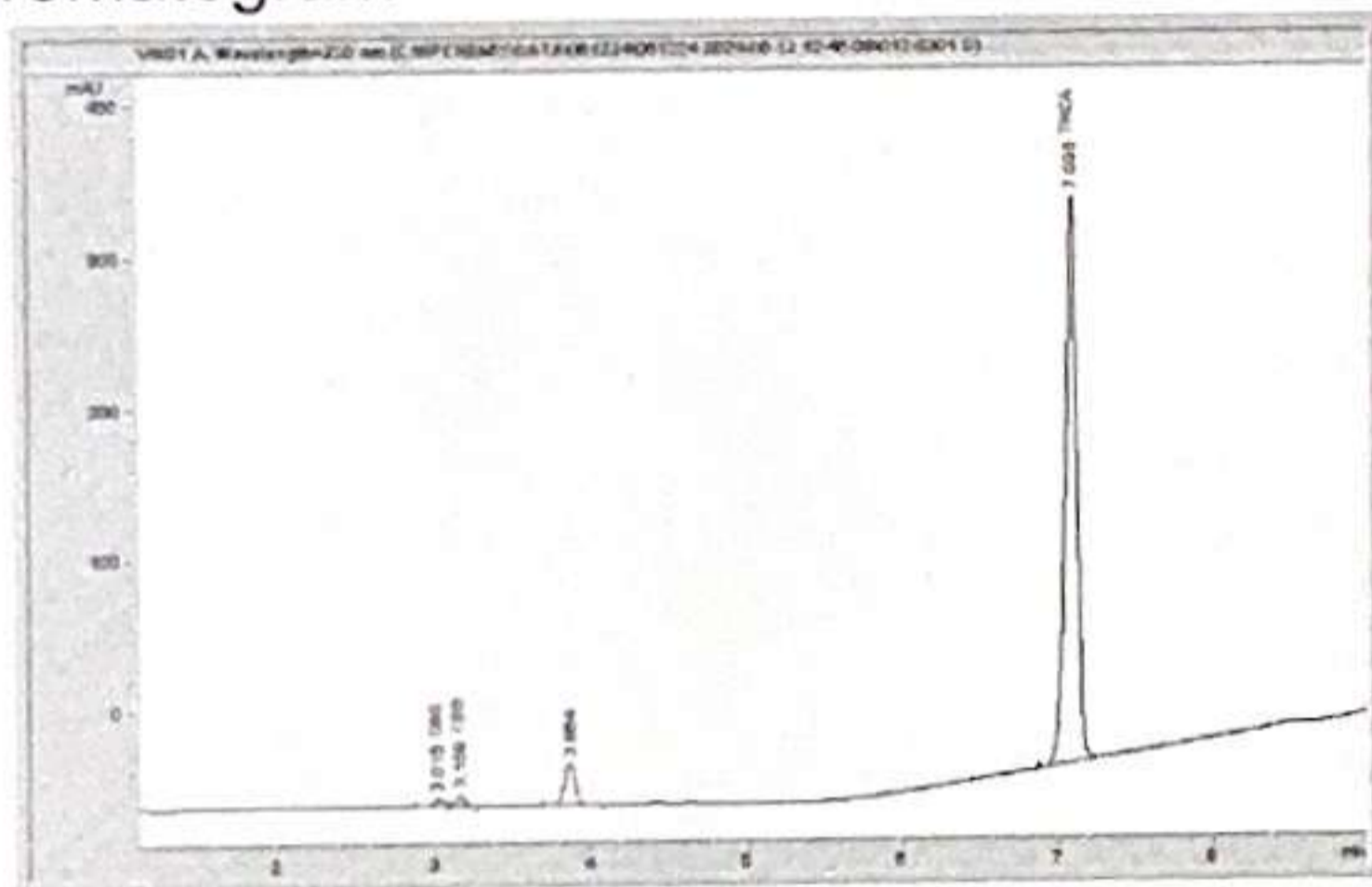
Sugar

Sample Submitted: 06-12-2024; Report Date: 06-19-2024

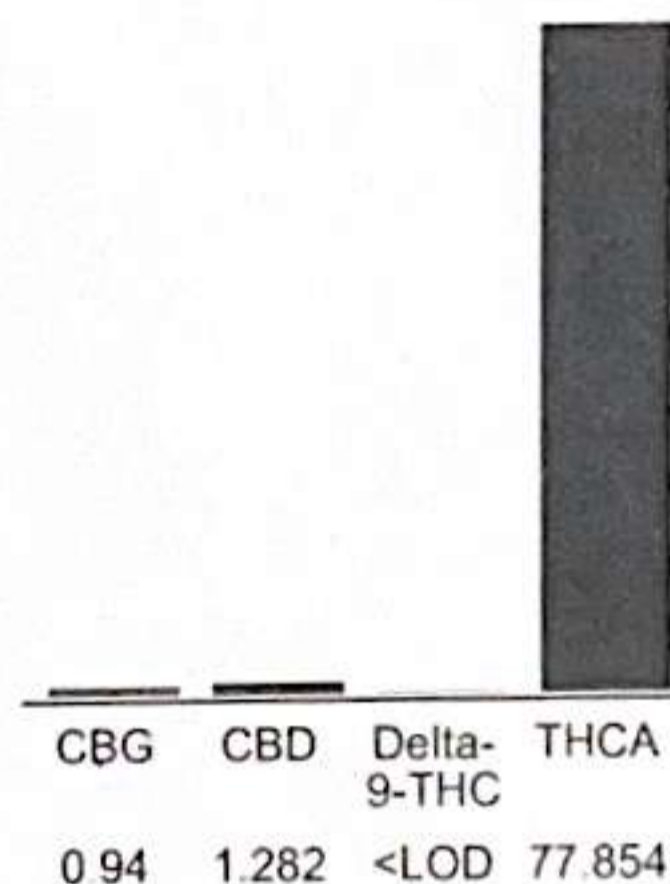
**THCa Sugar**

Extract / Concentrate

Chromatogram



Cannabinoid Profile



Cannabinoid Profile by HPLC

**0.00%**  
Delta-9-THC

**1.28%**  
CBD

**80.08%**  
Total Cannabinoids

Cannabinoid	% wt	mg/g
CBG	0.94	9.4
CBD	1.282	12.82
Delta-9-THC	<LOD	<LOD
THCA	77.85	778.54
<b>Total Cannabinoids</b>	<b>80.08</b>	<b>800.8</b>
<b>Calculated Total THC</b>	<b>68.28</b>	<b>682.78</b>
<b>Calculated CBD Yield</b>	<b>1.28</b>	<b>12.82</b>

Calculated Total THC = Delta-9-THC + 0.877 \* THCA  
 Calculated Maximum CBD Yield = CBD + 0.877 \* CBDA

**Notes:** Delta-9-THC limit of Detection (LOD): 0.001%

**Marin Analytics, LLC**  
 250 Bel Marin Keys Blvd, Suite D4  
 Novato, CA 94949  
 833-321-TEST / info@marinanalytics.com

**Mike Clemmons**  
 Lab Manager

This sample has been tested by Marin Analytics, LLC using valid testing methodologies and a quality system. Values reported relate only to the sample tested. Marin Analytics, LLC makes no claims as to the efficacy, safety, or other risks associated with any detected or non-detected levels of any compounds reported herein. This Certificate shall not be reproduced except in full without the written approval of Marin Analytics, LLC. Copyright 2023 Marin Analytics, LLC All Rights Reserved



Concentrate Group

Sample 678-031924-039

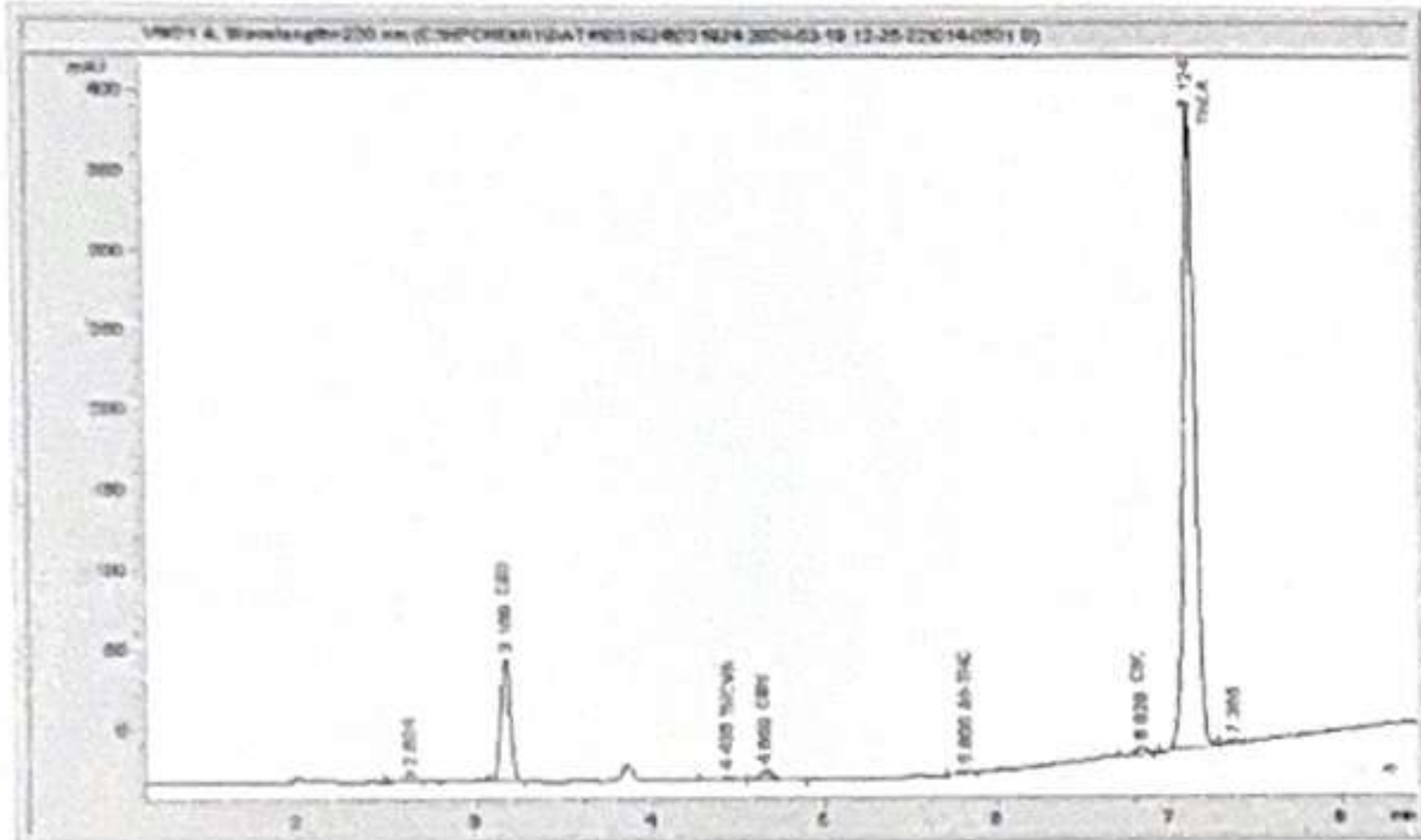
Sauce 'n Diamonds

Sample Submitted: 03-19-2024; Report Date: 03-26-2024

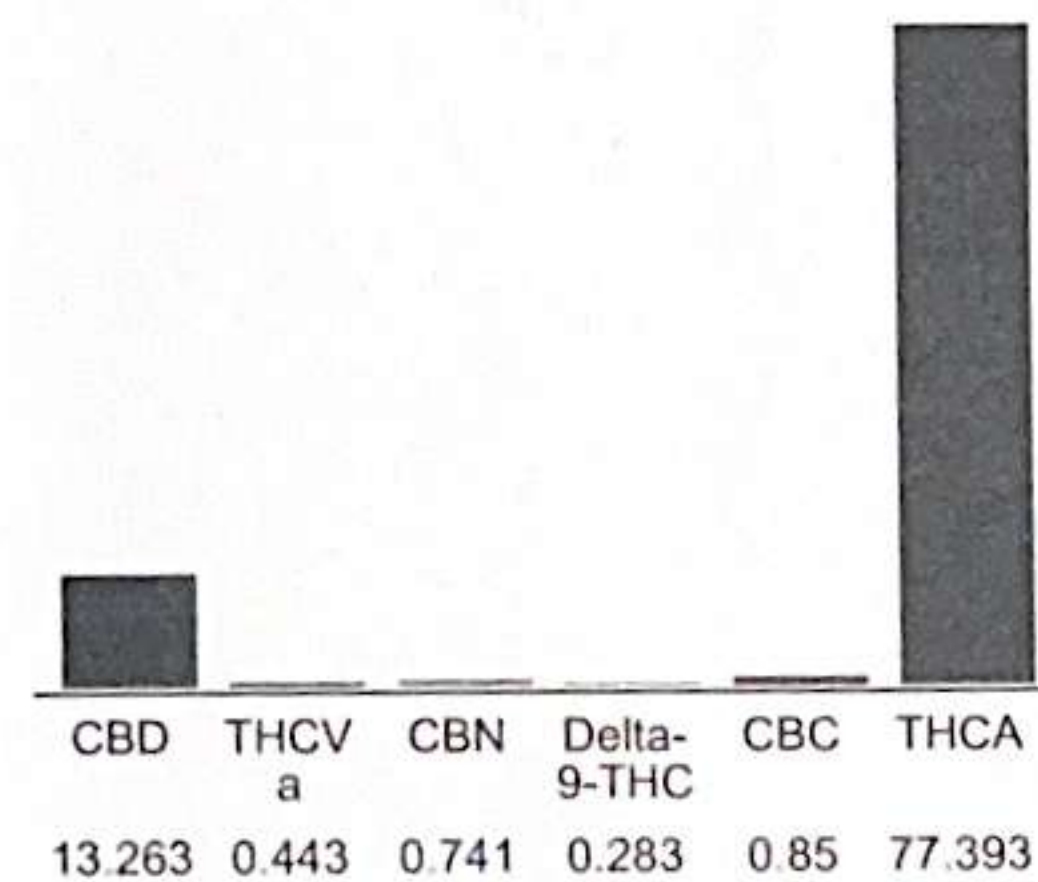
**Sauce 'n Diamonds**

Extract / Concentrate

Chromatogram



Cannabinoid Profile



Cannabinoid Profile by HPLC

**0.28%**  
Delta-9-THC

**13.26%**  
CBD

**92.97%**  
Total Cannabinoids

Cannabinoid	% wt	mg/g
CBD	13.26	132.63
THCVa	0.443	4.43
CBN	0.741	7.41
Delta-9-THC	0.283	2.83
CBC	0.85	8.5
THCA	77.39	773.93
<b>Total Cannabinoids</b>	<b>92.97</b>	<b>929.7</b>
<b>Calculated Total THC</b>	<b>68.16</b>	<b>681.57</b>
<b>Calculated CBD Yield</b>	<b>13.26</b>	<b>132.63</b>

Calculated Total THC = Delta-9-THC + 0.877 \* THCA  
 Calculated Maximum CBD Yield = CBD + 0.877 \* CBDA

**Marin Analytics, LLC**  
 250 Bel Marin Keys Blvd, Suite D4  
 Novato, CA 94949

833-321-TEST / info@marinanalytics.com

**Mike Clemmons**  
 Lab Manager

This sample has been tested by Marin Analytics, LLC using valid testing methodologies and a quality system. Values reported relate only to the sample tested. Marin Analytics, LLC makes no claims as to the efficacy, safety, or other risks associated with any detected or non-detected levels of any compounds reported herein. This Certificate shall not be reproduced except in full without the written approval of Marin Analytics, LLC. Copyright 2023 Marin Analytics, LLC All Rights Reserved.





# PINNACLE — ANALYTICS —

## Potency Results

Sample Name: *Nepalese Temple Ball Hashish*  
Client: Concentrate Group  
Client Batch ID:

Pinnacle-Analytics.com  
3549 Lear Way, Suite 101  
Medford OR 97504  
P:(541)300-8217

**Sample ID:** rC-HS-472-E417

**Matrix:** Concentrate

Prep Analyst: Jeff A.

Analysis Method: 0630322+1 H3 4-20-2022 #1.lcm

Sampling Method: N/A

Reference Method: JCB 2009: HPLC/DAD

Analysis Batch: 2-23-2024 H3 22, 302, 407, 416, 434, 458 Solids

Date Sampled: 2/23/2024

Date Reported: 3/26/2024

Client License: N/A

700 NW 4th St.

Oklahoma City OK 73102

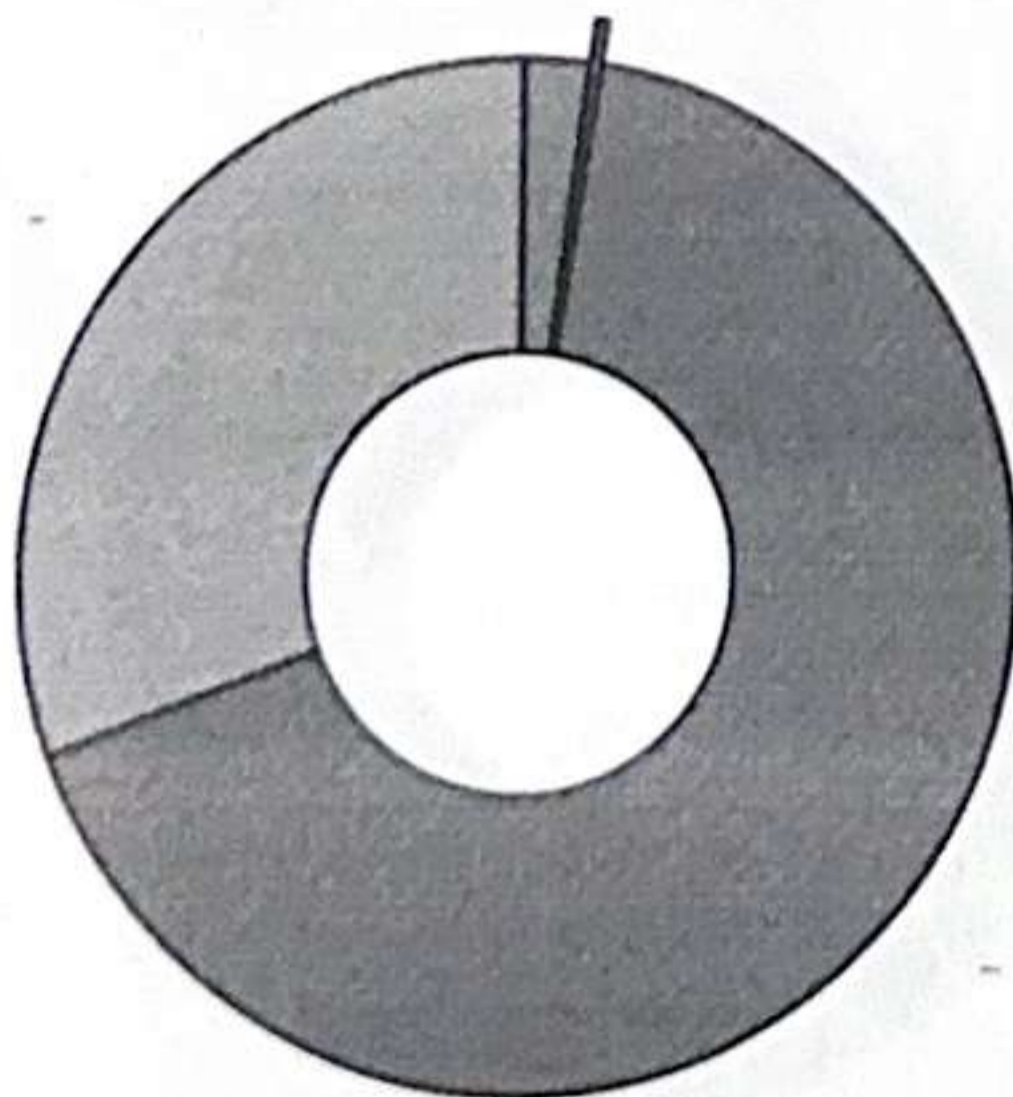
For R&D Purposes Only

<b>Total THC</b> (THCA*0.877+d9-THC)	58.6%
<b>Total CBD</b> (CBDA*0.877+CBD)	0.38%
<b>Moisture Content</b>	N/A

Cannabinoid	% Weight	mg/g
CBDVA	<LOQ	<LOQ
CBDV	<LOQ	<LOQ
CBDA*	<LOQ	<LOQ
CBGA	<LOQ	<LOQ
CBG	2.14	21.4
CBD*	0.38	3.8
THCV	<LOQ	<LOQ
CBN	<LOQ	<LOQ
d9-THC*	<LOQ	<LOQ
d8-THC*	<LOQ	<LOQ
CBC	<LOQ	<LOQ
THCA*	66.8	668.0
<b>Total Cannabinoids</b>	<b>69.32</b>	<b>693.0</b>

\*ORELAP Accredited Analyte

Limit Of Quantitation: 0.2%, analyte not measured



- CBG
- CBD\*
- THCA\*
- Other



These test results may not be altered or reproduced except in full without the permission of Pinnacle Analytics. These results were generated following the Oregon Administrative Rules and in accordance with the NELAP Institute under ORELAP License #4152  
Report generated by Routine\_Potency\_Rev13\_8-1-2023

Kris Ford, PhD  
Lab Director





# PINNACLE — ANALYTICS —

## Potency Results

Sample Name: *THCA Budder*  
Client: Concentrate CBD  
Client Batch ID:

Pinnacle-Analytics.com  
3549 Lear Way, Suite 101  
Medford OR 97504  
P:(541)300-8217

**Sample ID:** rC-HS-345-D338

**Matrix:** Concentrate

**Prep Analyst:** Megan E.

**Analysis Method:** 0630322+1 H3 4-20-2022 #1.lcm

**Sampling Method:** N/A

**Reference Method:** JCB 2009: HPLC/DAD

**Analysis Batch:** 4-19-2023 H3 14, 185, 234, 330, 345 Solids

Date Sampled: 4/17/2023

Date Reported: 4/20/2023

Client License:

5820 N.Church St

Suite D-307

Greensboro, NC 27455

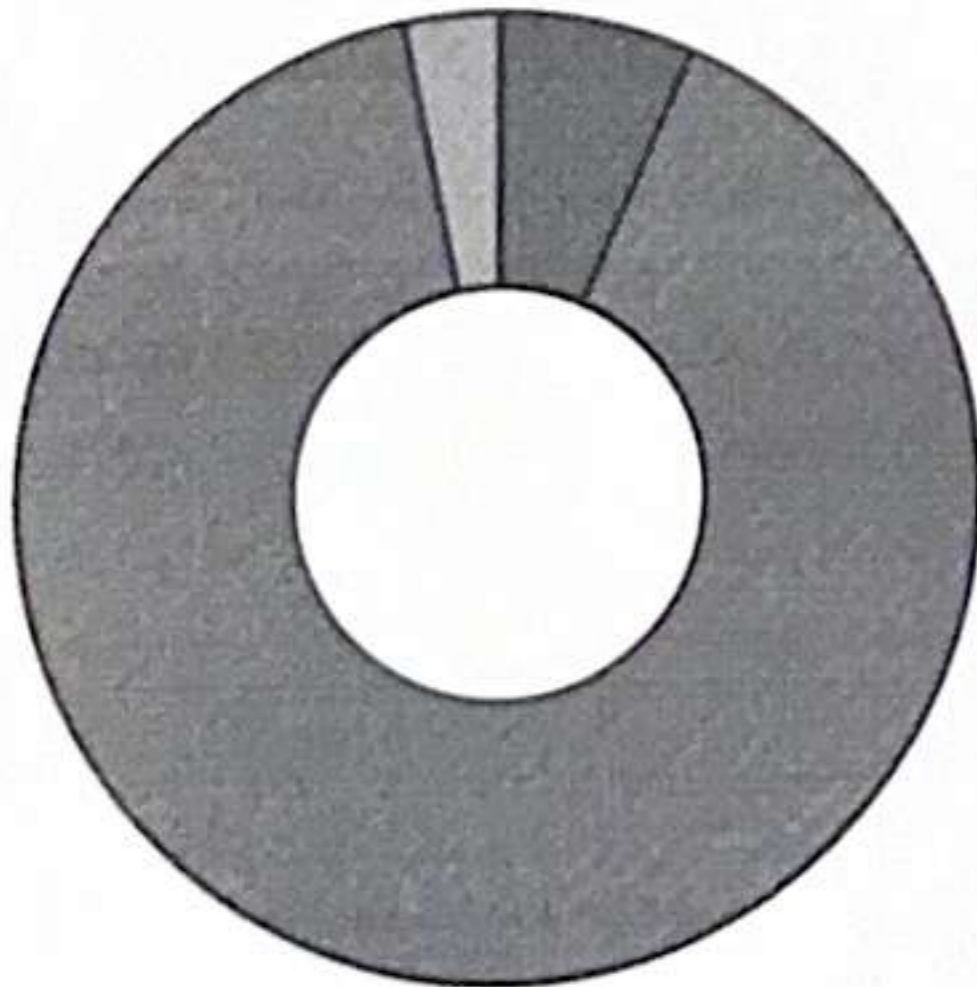
For R&D Purposes Only

<b>Total THC</b> (THCA*0.877+d9-THC)	79.1%
<b>Total CBD</b> (CBDA*0.877+CBD)	6.54%
<b>Moisture Content</b>	N/A

Cannabinoid	% Weight	mg/g
CBDVA	<LOQ	<LOQ
CBDV	<LOQ	<LOQ
CBDA*	<LOQ	<LOQ
CBGA	<LOQ	<LOQ
CBG	<LOQ	<LOQ
CBD*	6.54	65.4
THCV	<LOQ	<LOQ
CBN	<LOQ	<LOQ
d9-THC*	<LOQ	<LOQ
d8-THC*	<LOQ	<LOQ
CBC	<LOQ	<LOQ
THCA*	90.2	902.0
<b>Total Cannabinoids</b>	<b>96.7</b>	<b>967.0</b>

\*ORELAP Accredited Analyte

Limit Of Quantitation: 0.2%, analyte not measured



- CBD\*
- THCA\*
- Other



These test results may not be altered or reproduced except in full without the permission of Pinnacle Analytics. These results were generated following the Oregon Administrative Rules and in accordance with the NELAP Institute under ORELAP License #4152  
Report generated by Routine\_Potency\_Rev11\_4-16-2023

Kris Ford, PhD  
Lab Director





# PINNACLE — ANALYTICS —

## Potency Results

Sample Name: *Manali Cream*  
Client: Concentrate CBD  
Client Batch ID:

Pinnacle-Analytics.com  
3549 Lear Way, Suite 101  
Medford OR 97504  
P:(541)300-8217

**Sample ID:** rC-HS-345-D344

**Matrix:** Concentrate

Prep Analyst: Megan E.

Analysis Method: 0630322+1 H3 4-20-2022 #1.lcm

Sampling Method: N/A

Reference Method: JCB 2009: HPLC/DAD

Analysis Batch: 4-19-2023 H3 14, 185, 234, 330, 345 Solids

Date Sampled: 4/17/2023

Date Reported: 4/20/2023

Client License:

5820 N.Church St

Suite D-307

Greensboro, NC 27455

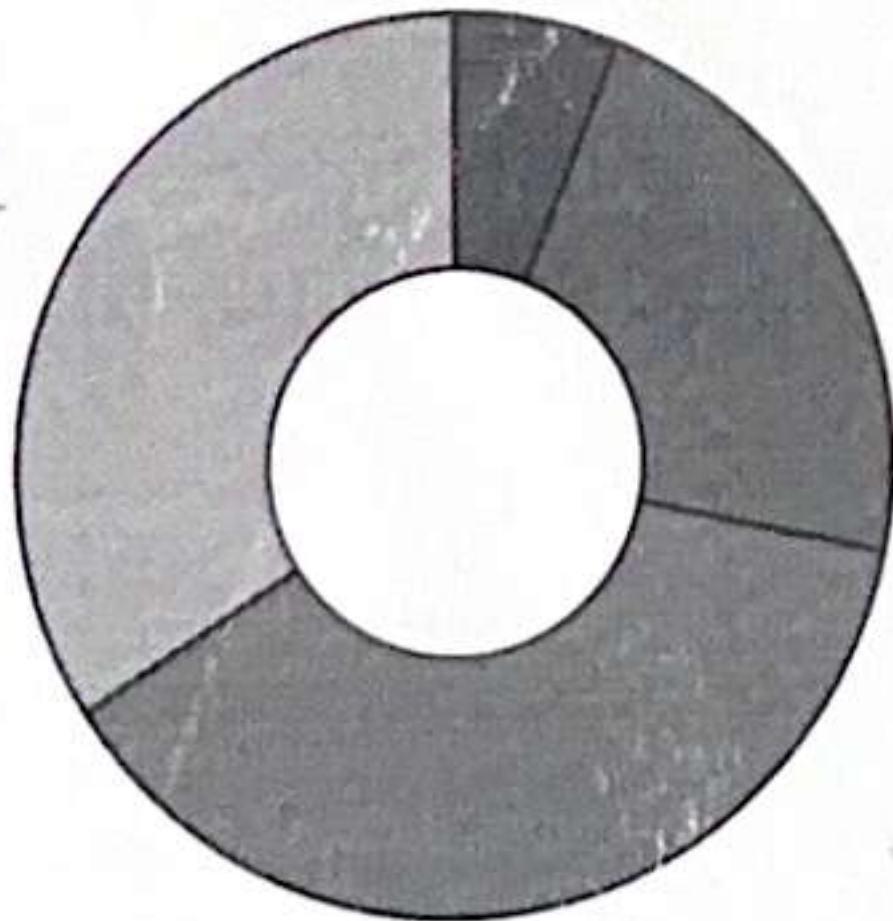
For R&D Purposes Only

<b>Total THC</b> (THCA*0.877+d9-THC)	33.0%
<b>Total CBD</b> (CBDA*0.877+CBD)	22.2%
<b>Moisture Content</b>	N/A

Cannabinoid	% Weight	mg/g
CBDVA	<LOQ	<LOQ
CBDV	<LOQ	<LOQ
CBDA*	<LOQ	<LOQ
CBGA	6.09	60.9
CBG	<LOQ	<LOQ
CBD*	22.2	222.0
THCV	<LOQ	<LOQ
CBN	<LOQ	<LOQ
d9-THC*	<LOQ	<LOQ
d8-THC*	<LOQ	<LOQ
CBC	<LOQ	<LOQ
THCA*	37.7	377.0
<b>Total Cannabinoids</b>	<b>66.0</b>	<b>660.0</b>

\*ORELAP Accredited Analyte

Limit Of Quantitation: 0.2%, analyte not measured



- CBGA
- CBD\*
- THCA\*
- Other



These test results may not be altered or reproduced except in full without the permission of Pinnacle Analytics. These results were generated following the Oregon Administrative Rules and in accordance with the NELAP Institute under ORELAP License #4152  
Report generated by Routine\_Potency\_Rev11\_4-16-2023

Kris Ford, PhD  
Lab Director



Concentrate Group

Sample 678-010224-026

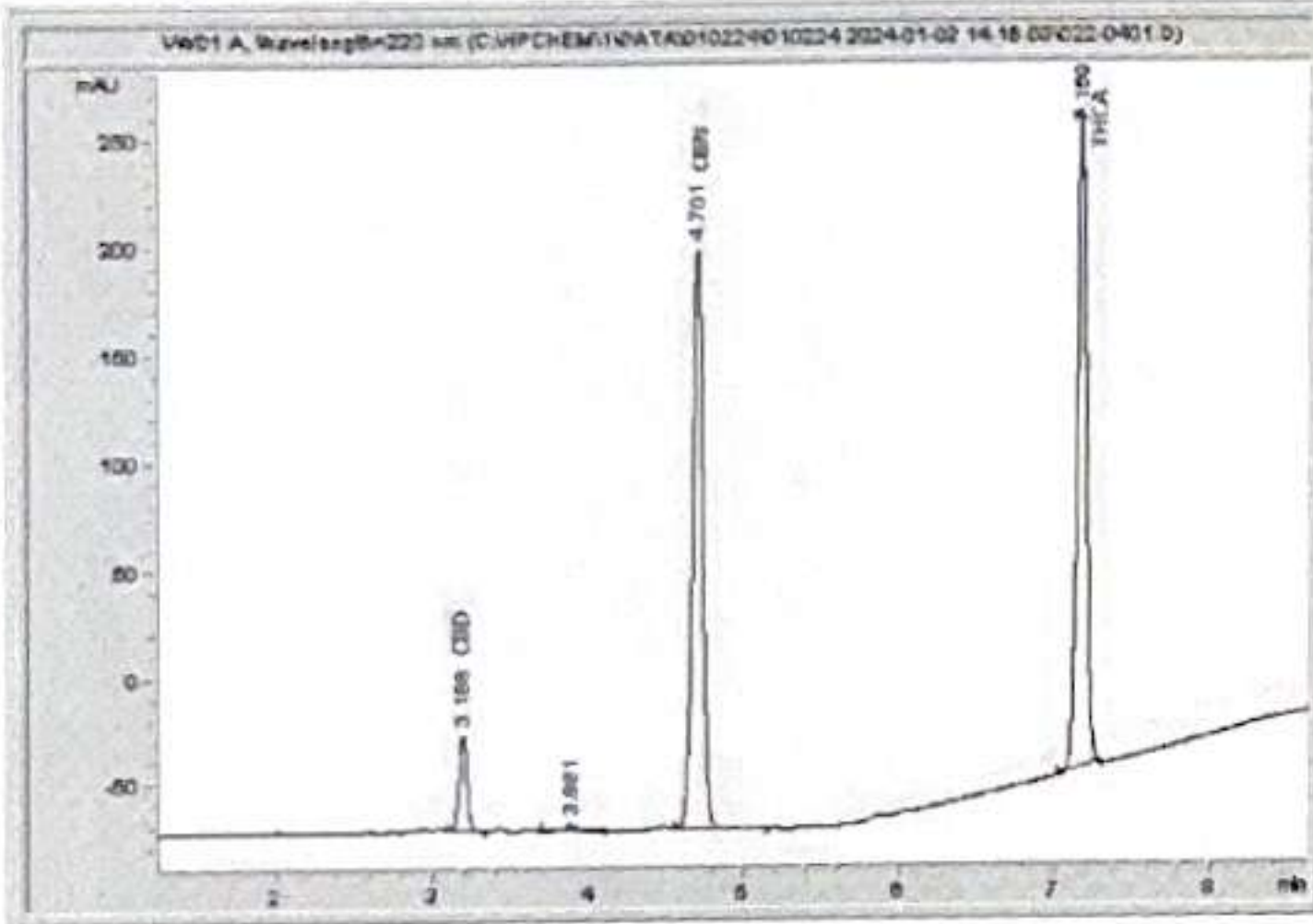
Budder (THCA CBN)

Sample Submitted: 01-02-2024; Report Date: 01-08-2024

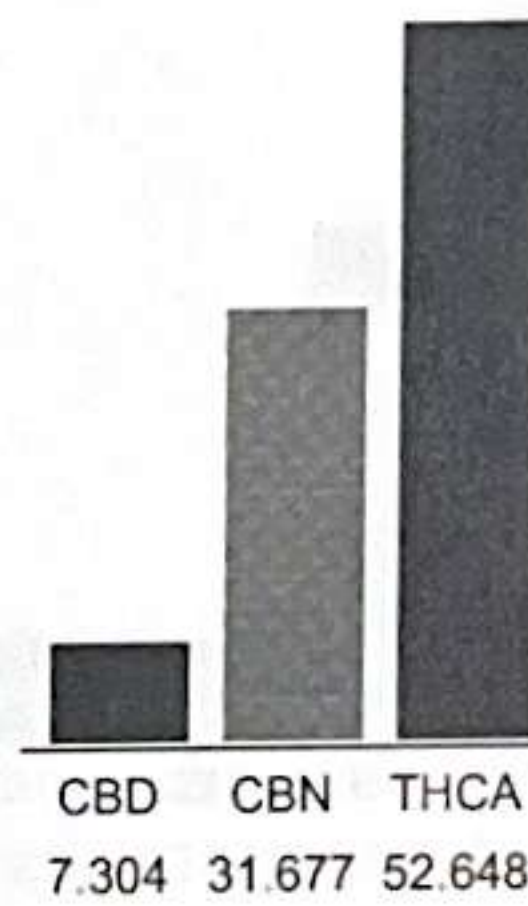
**THCA-CBN Budder**

Extract / Concentrate

Chromatogram



Cannabinoid Profile



Cannabinoid Profile by HPLC

**0.00%**  
Delta-9-THC

**7.30%**  
CBD

**91.63%**  
Total Cannabinoids

Cannabinoid	% wt	mg/g
CBD	7.304	73.04
CBN	31.68	316.77
THCA	52.65	526.48
<b>Total Cannabinoids</b>	<b>91.63</b>	<b>916.3</b>
<b>Calculated Total THC</b>	<b>46.17</b>	<b>461.72</b>
<b>Calculated CBD Yield</b>	<b>7.30</b>	<b>73.04</b>

Calculated Total THC = Delta-9-THC + 0.877 \* THCA  
 Calculated Maximum CBD Yield = CBD + 0.877 \* CBDA

**Marin Analytics, LLC**  
 250 Bel Marin Keys Blvd, Suite D4  
 Novato, CA 94949

833-321-TEST / info@marinanalytics.com

**Mike Clemmons**  
 Lab Manager

This sample has been tested by Marin Analytics, LLC using valid testing methodologies and a quality system. Values reported relate only to the sample tested. Marin Analytics, LLC makes no claims as to the efficacy, safety, or other risks associated with any detected or non-detected levels of any compounds reported herein. This Certificate shall not be reproduced except in full without the written approval of Marin Analytics, LLC. Copyright 2023 Marin Analytics, LLC All Rights Reserved.



Concentrate Group

Sample 678-010224-027

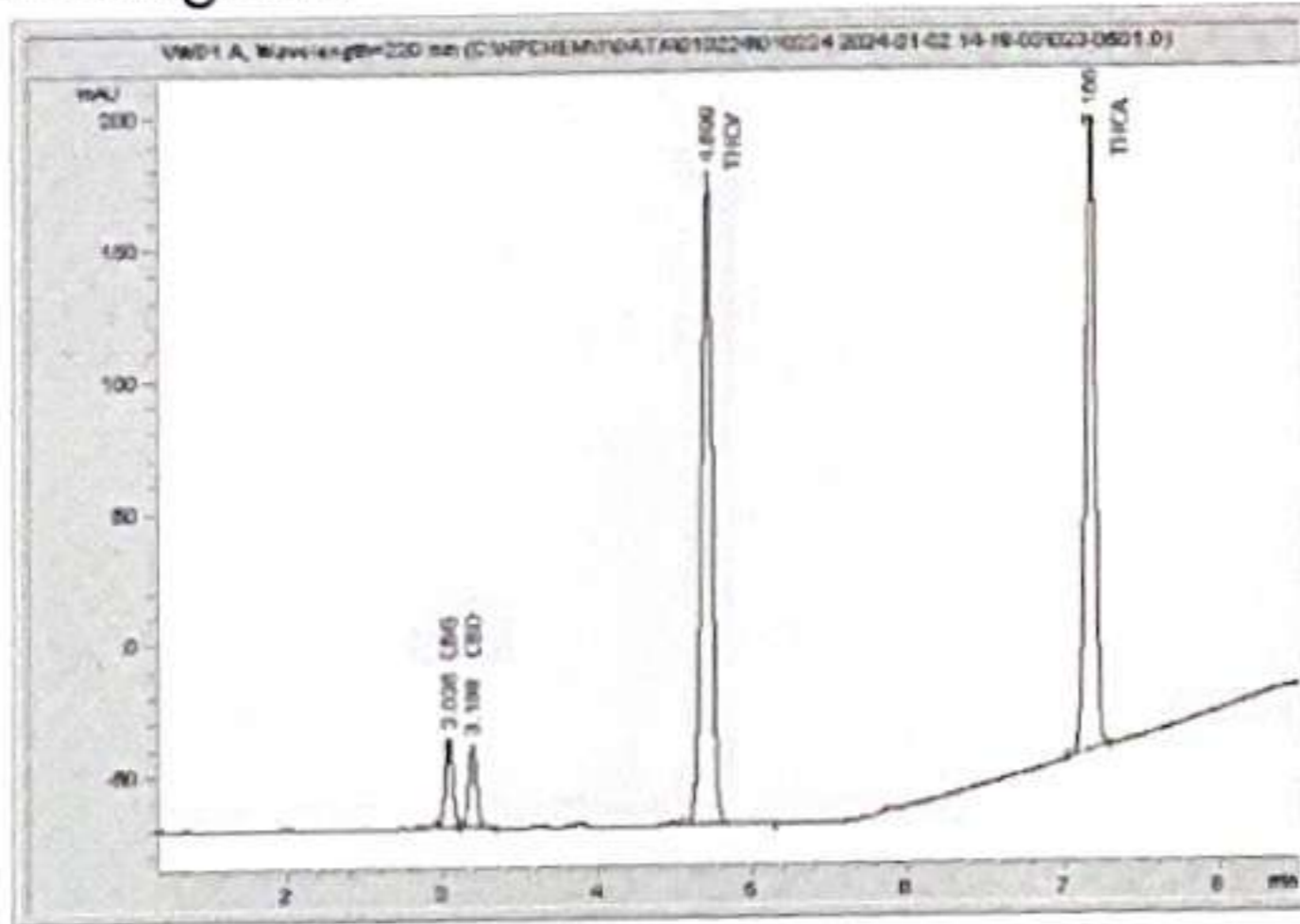
Crystallino (THCA/CBN)

Sample Submitted: 01-02-2024; Report Date: 01-08-2024

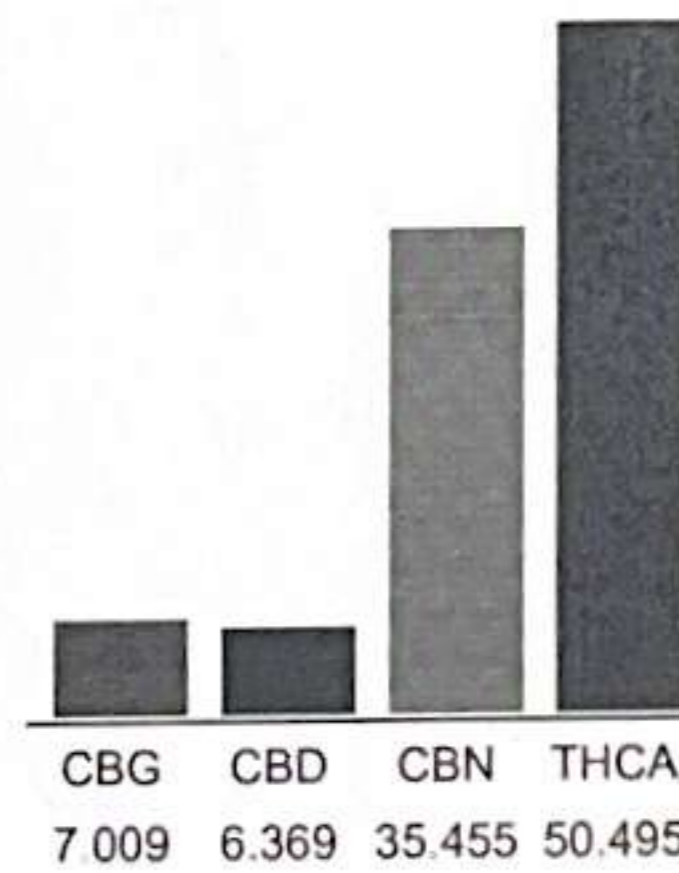
**THCA-CBN Crystallino**

Isolate

Chromatogram



Cannabinoid Profile



Cannabinoid Profile by HPLC

**0.00%**  
Delta-9-THC

**6.37%**  
CBD

**99.33%**  
Total Cannabinoids

Cannabinoid	% wt	mg/g
CBG	7.009	70.09
CBD	6.369	63.69
CBN	35.46	354.55
THCA	50.5	504.95
<b>Total Cannabinoids</b>	<b>99.33</b>	<b>993.3</b>
<b>Calculated Total THC</b>	<b>44.28</b>	<b>442.84</b>
<b>Calculated CBD Yield</b>	<b>6.37</b>	<b>63.69</b>

Calculated Total THC = Delta-9-THC + 0.877 \* THCA  
 Calculated Maximum CBD Yield = CBD + 0.877 \* CBDA

**Marin Analytics, LLC**  
 250 Bel Marin Keys Blvd, Suite D4  
 Novato, CA 94949

833-321-TEST / info@marinanalytics.com

**Mike Clemmons**  
 Lab Manager

This sample has been tested by Marin Analytics, LLC using valid testing methodologies and a quality system. Values reported relate only to the sample tested. Marin Analytics, LLC makes no claims as to the efficacy, safety, or other risks associated with any detected or non-detected levels of any compounds reported herein. This Certificate shall not be reproduced except in full without the written approval of Marin Analytics, LLC. Copyright 2023 Marin Analytics, LLC All Rights Reserved.





Concentrate Group

Sample 678-031924-036

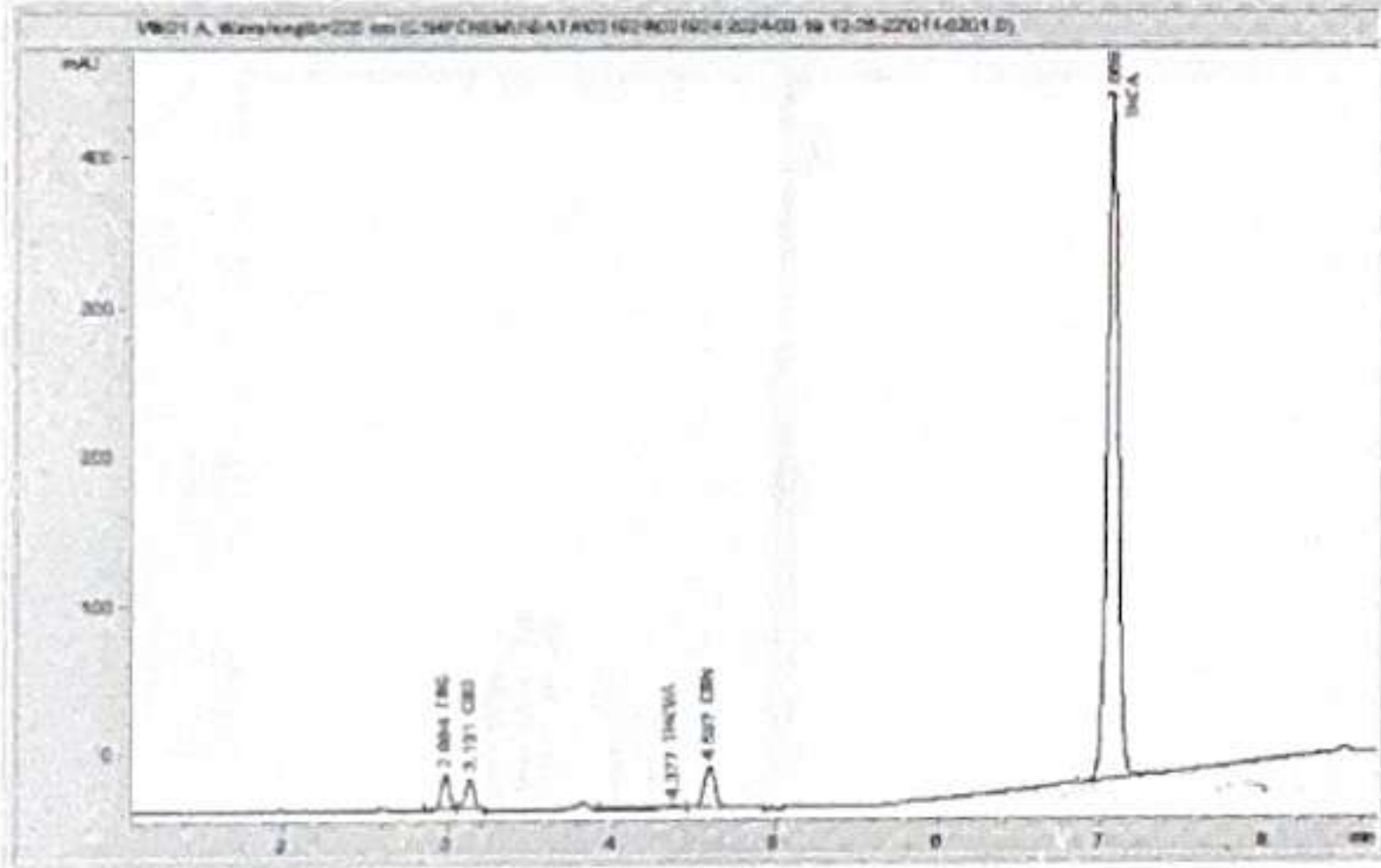
Rosin 1

Sample Submitted: 03-19-2024; Report Date: 03-26-2024

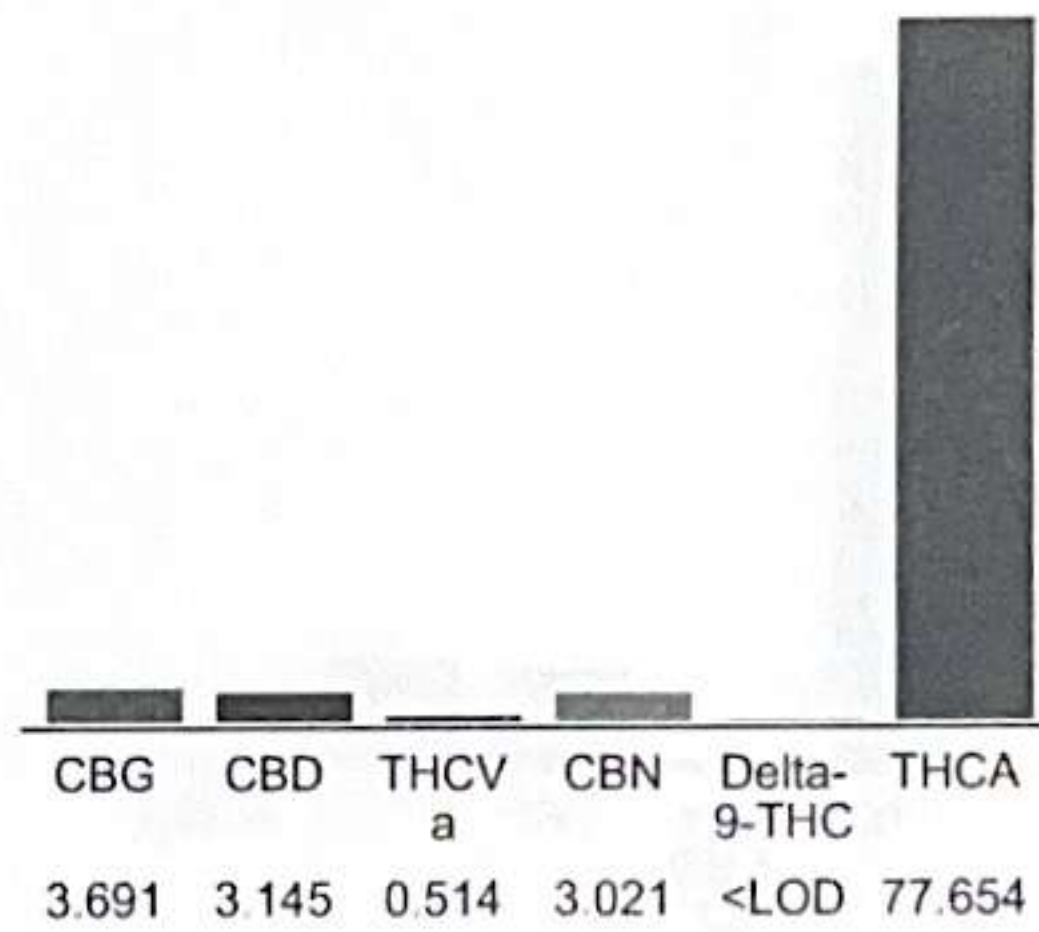
**THCa Rosin**

Extract / Concentrate

Chromatogram



Cannabinoid Profile



Cannabinoid Profile by HPLC

**0.00%**  
Delta-9-THC

**3.15%**  
CBD

**88.02%**  
Total Cannabinoids

Cannabinoid	% wt	mg/g
CBG	3.691	36.91
CBD	3.145	31.45
THCVa	0.514	5.14
CBN	3.021	30.21
Delta-9-THC	<LOD	<LOD
THCA	77.65	776.54
<b>Total Cannabinoids</b>	<b>88.02</b>	<b>880.2</b>
<b>Calculated Total THC</b>	<b>68.10</b>	<b>681.03</b>
<b>Calculated CBD Yield</b>	<b>3.15</b>	<b>31.45</b>

Calculated Total THC = Delta-9-THC + 0.877 \* THCA  
Calculated Maximum CBD Yield = CBD + 0.877 \* CBDA

**Notes:** Delta-9-THC Limit of Detection (LOD): 0.001%

**Marin Analytics, LLC**  
250 Bel Marin Keys Blvd, Suite D4  
Novato, CA 94949

833-321-TEST / info@marinanalytics.com

**Mike Clemmons**  
Lab Manager

This sample has been tested by Marin Analytics, LLC using valid testing methodologies and a quality system. Values reported relate only to the sample tested. Marin Analytics, LLC makes no claims as to the efficacy, safety, or other risks associated with any detected or non-detected levels of any compounds reported herein. This Certificate shall not be reproduced except in full without the written approval of Marin Analytics, LLC. Copyright 2023 Marin Analytics, LLC All Rights Reserved.



Concentrate Group

Sample 678-010224-025

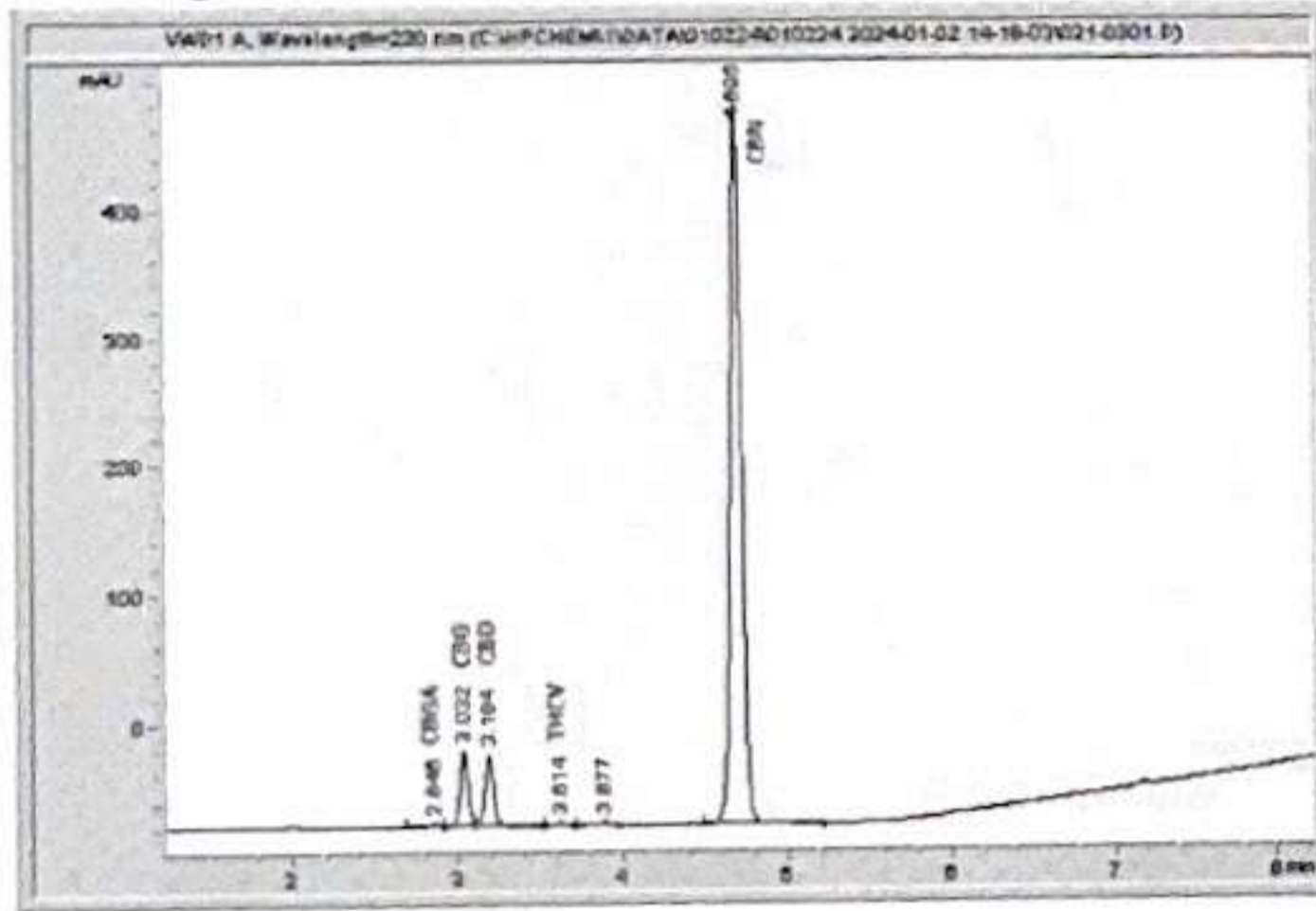
Crystallino CBN

Sample Submitted: 01-02-2024; Report Date: 02-08-2024

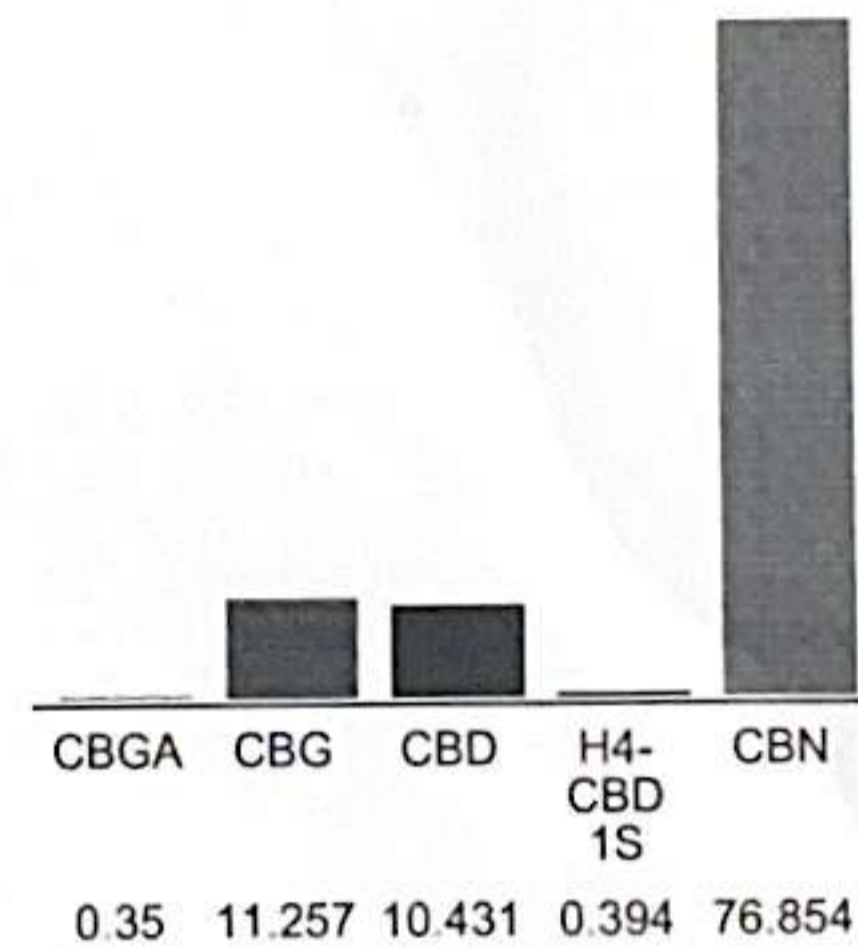
**CBN Crystallino**

Isolate

Chromatogram



Cannabinoid Profile



Cannabinoid Profile by HPLC

**0.00%**  
Delta-9-THC

**10.43%**  
CBD

**99.29%**  
Total Cannabinoids

Cannabinoid	% wt	mg/g
CBGA	0.35	3.5
CBG	11.26	112.57
CBD	10.43	104.31
H4-CBD 1S	0.394	3.94
CBN	76.85	768.54
<b>Total Cannabinoids</b>	<b>99.29</b>	<b>992.9</b>
<b>Calculated Total THC</b>	<b>0.00</b>	<b>0.00</b>
<b>Calculated CBD Yield</b>	<b>10.43</b>	<b>104.31</b>

Calculated Total THC = Delta-9-THC + 0.877 \* THCA  
 Calculated Maximum CBD Yield = CBD + 0.877 \* CBDA

**Marin Analytics, LLC**  
 250 Bel Marin Keys Blvd, Suite D4  
 Novato, CA 94949  
 833-321-TEST / info@marinanalytics.com

**Mike Clemmons**  
 Lab Manager

This sample has been tested by Marin Analytics, LLC using valid testing methodologies and a quality system. Values reported relate only to the sample tested. Marin Analytics, LLC makes no claims as to the efficacy, safety, or other risks associated with any detected or non-detected levels of any compounds reported herein. This Certificate shall not be reproduced except in full without the written approval of Marin Analytics, LLC. Copyright 2023 Marin Analytics, LLC All Rights Reserved.